

Anti-beta Actin Mouse Monoclonal Antibody

Cat. No.	Package
FI01103S	100 μ L
FI01103M	500 μ L (5*100 μ l)

PROPERTIES

Host Species	Mouse
Conjugate	Unconjugated
Purified By	Affinity chromatography (Protein G purification)
Antibody Product Type	Primary antibodies
Concentration	1mg/ml
Isotype	IgG2b
Immunogen	Human beta Actin fusion protein (Uniprot: P60709; NCBI: NM_001101)

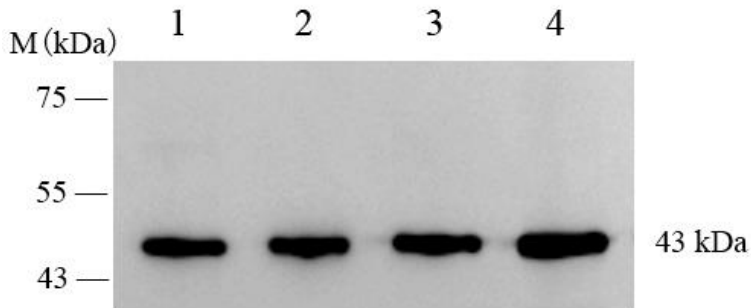
STORAGE

Storage	Store at -20°C, stable for one year after shipment
Storage Buffer	Aqueous solution (20mmol PBS, 0.01% Thimerosal, 50% glycerol, 0.2% BSA)

APPLICATIONS

Species Reactivity	Human, Mouse, Rat, Pig, Hamster, Monkey, Canine, Bovine, Chicken, Duck, Zebrafish, Drosophila, Arabidopsis
Applications	WB, ELISA, IP, IF, IHC, FC WB: 1:10000-1:40000 IP: 1-4 μ g for IP and 1:5000-1:20000 for WB IF: 1:200-1:1000

SAMPLE APPLICATION



Western blot

Lysates/proteins at 10 µg per lane.

Lane 1: HEK-293T (human) whole cell lysate

Lane 2: C2C12 (mouse) whole cell lysate

Lane 3: C6 (rat) whole cell lysate

Lane 4: PK15 (pig) whole cell lysate

Primary antibody: Anti-beta actin antibody(FI01103) at 1/10000 dilution

Secondary antibody: Goat Anti-Mouse IgG (H+L) at 1/8000 dilution

Predicted band size: 43 kDa